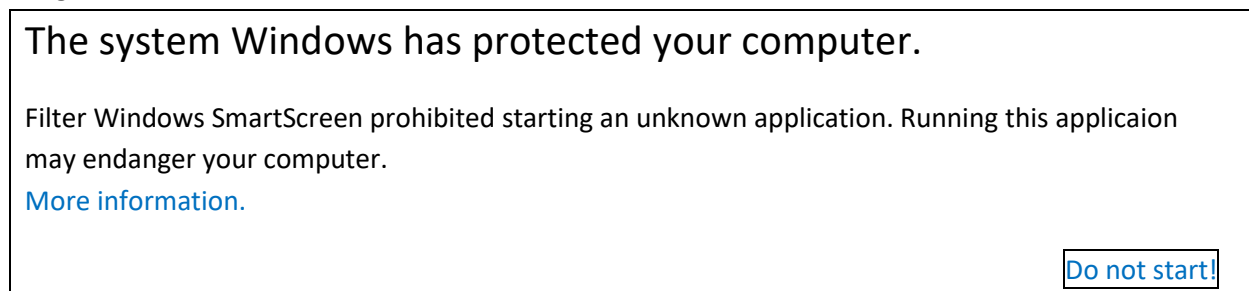


Following window messages may appear.

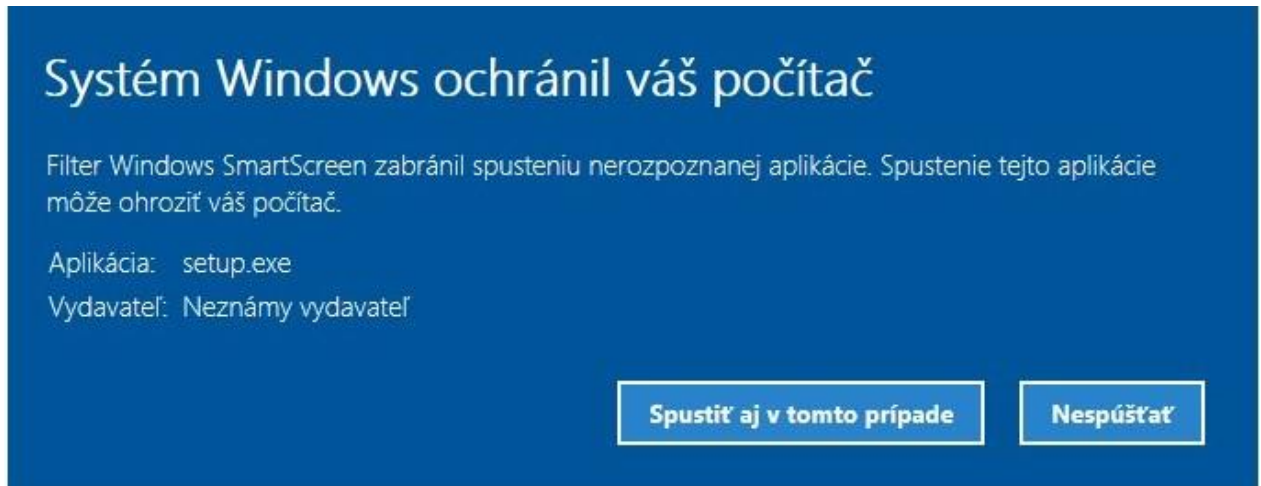


English version:

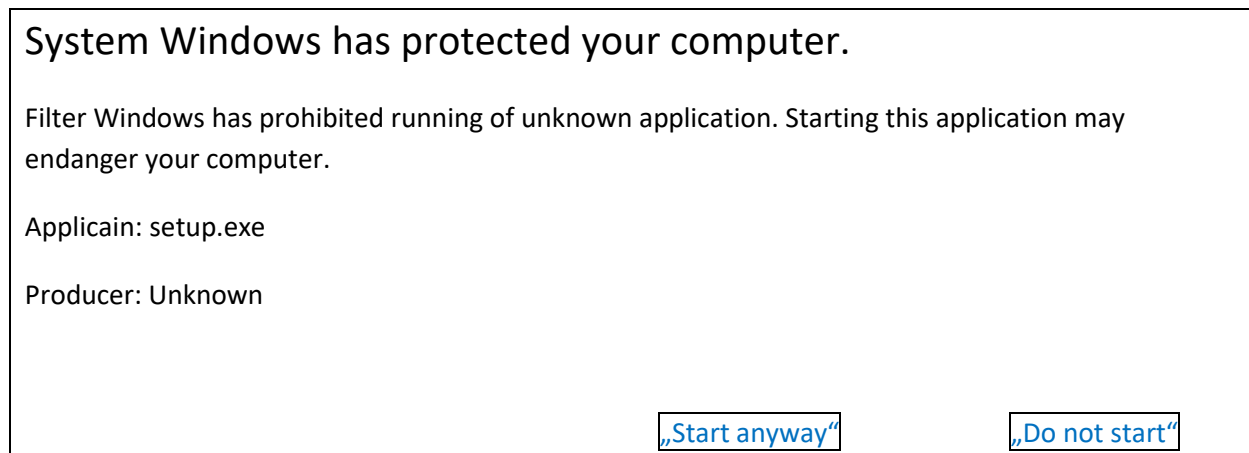


Should such a message appear, press „More information“.

Following window with message appears:



English version:

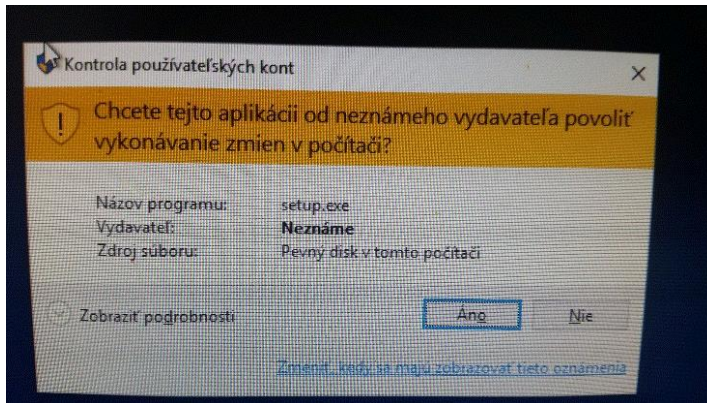


O continue click on „Start anyway“.

1. Start installation

Unzip (by clicking with the mouse right button) on „xxxxx\_inst\_V3.zip“ (xxxxx – name of the system, e.g. premium, ...) into a directory offered.

Start installation by click on setup.exe. Following windows will appear:



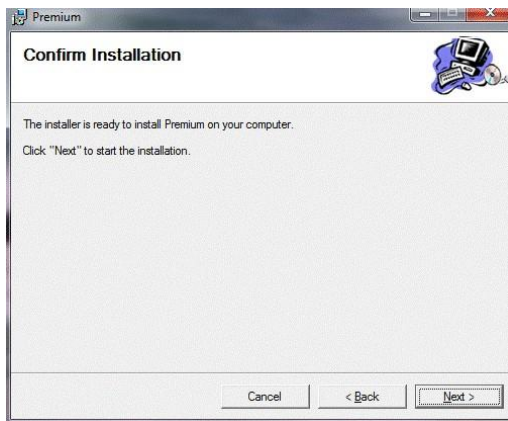
Confirm by click on YES



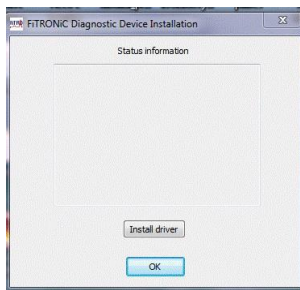
Confirm by click on NEXT. Installation continues.



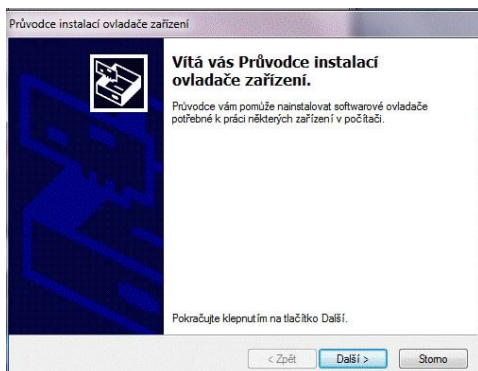
Again, confirm by click on NEXT. Alternatively change directory into which you wish the program to be installed.



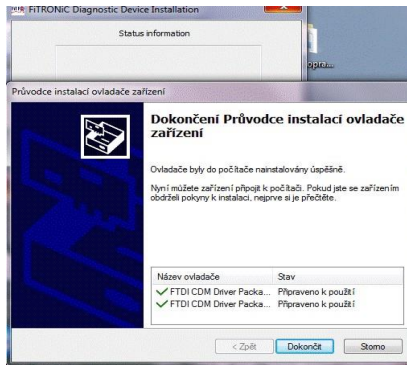
Confirm installation by click on NEXT.



Confirm installation of driver in left window.



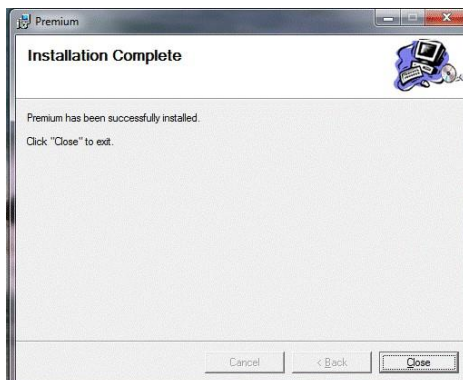
Agree with installation conditions and confirm clicking on NEXT.



Confirm finishing of driver installation by click on FINISH.



After correct installation, a window (upper left) with a text “0 error a Pre installed:2” appear. Click on OK to continue.



Click on CLOSE. Installation is completed. Icon of the FiTRO system installed appears on the main screen.

1. After finishing installation connect appropriate FiTRO device to USB port and wait until additional driver is installed.  
Should it happen that after starting the program report “Error in communication” appears on the screen, check if the driver has been installed correctly as follows:  
Click with right mouse button on My computer, then Properties and Device Manager.



### **In case of problems:**

2. Beware of access rights into directory...ProgramFiles. From Win7 on there is block to write user's data into this directory. In this case we recommend to install program into a different directory, e.g. C:/FiTRONIC.
3. Should the problem still persist (this may be the case if there are still the older versions of FiTRO devices installed on the computer), uninstall the old versions.